

## BUSINESS INTELLIGENCE & REPORTING SOLUTION FOR PROLAW

↑ PROFITS ↑ GROWTH ↑ TRANSPARENCY

You've chosen ProLaw to manage your firm's information, now it's time to harness the value of that data with Terminus Pro; a light-weight, powerful business intelligence and reporting solution customized for law firms.

Data-analysis is easier than ever with personalized dashboards for Partners, Finance Professionals and Attorneys. Additional details are one click away, and creating custom reports is instantaneous with dynamic, drag and drop technology. In only seconds, you can see, share and react to today's data, preparing your firm for the future.

### FEATURES

- **Over 20 Key Performance Indicators:** the most of any BI solution for ProLaw
- **Pre-Built Summary & Detail Dashboards:** customized reports for Partners, Finance Professionals & Attorneys
- **Role Based Reporting:** restrict data view by role
- **Drag & Drop:** user-friendly Custom Reports & Dashboards on the fly
- **Drill Down:** dig deep into the data
- **Perspective:** graph, chart, & report views
- **Visualization:** Single view or multi-source reporting
- **Share reports:** via email, Excel community
- **Triggers & Alerts:** never miss a milestone or mishap
- **Web-based:** access Terminus Pro on the go!

### BENEFITS

- Make data-driven decisions quickly
- Increase profitability with cost control, improved productivity and reduced costs
- Enrich client experience with on-demand reporting and enhanced transparency
- Maximize the value of your IT assets for today and the future



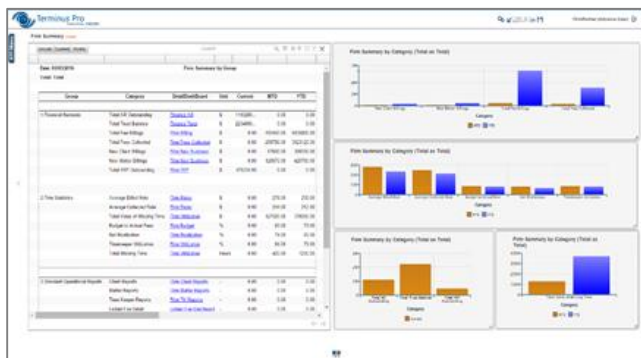
*“As a non-profit firm we track and report on thousands of volunteers and the hours they've donated. Previously this has been a very lengthy process requiring hours of precious man-power. Since implementing Terminus Pro we can have this information to the right people in seconds, and it relieves our staff to do other things to fulfill our mission. We liked Terminus Pro's out of the box functionality and it was easy to configure for our needs.”* - Scot Moore, IT Director at Public Counsel, Nation's Largest Pro Bono Law Firm

## BUSINESS INTELLIGENCE & REPORTING SOLUTION FOR PROLAW

### Pre-Configured Dashboards

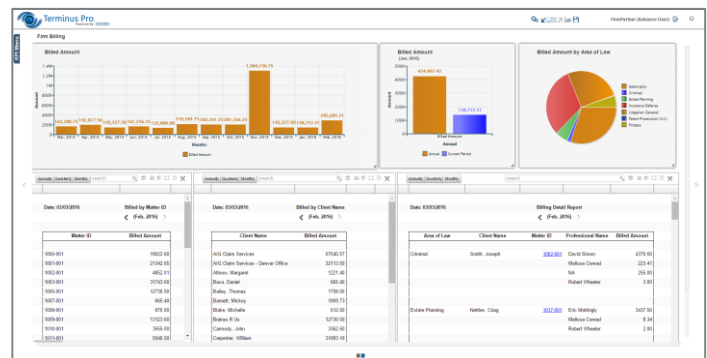
- Personalized for Firm Partners, Attorneys and Finance Professionals. The one-page summary dashboard offers key numbers, metrics and reports that are most important to the user.
- Visualization of Key Performance Indicators offers ability to track trends and identify business issues quickly
- Details of reports are available with one click for additional data analysis and prompt decision making.
- All reports, charts, graphs and grids are customizable and dynamic for on-demand business intelligence.

#### Summary Dashboard



Neatly laid out on one page, summary dashboards offer Current, Month to Date and Year to Date conditions for your most important KPIs. Firm members can quickly identify issues, and with one-click detailed reports will open with additional information.

#### Detail Dashboard



Detailing multiple aspects of firm information this data empowers users to make more effective decisions. All reports, grids and charts are dynamic, allowing firm members to uncover further detail with just a few clicks. The reports can be customized and are easy to share by exporting to Excel.

### Multi-Source Reporting

Terminus Pro has an in-built multi-source framework which enables it to source data from many data sources using configurable data connectors. The connector for ProLaw is already included as part of Terminus Pro. Included data connectors: SQL Databases, Excel, SharePoint Lists, XML, Flat Files, Web Services, and Proprietary Data Sources.

*You can now open ProLaw directly from a Terminus Pro Report or Dashboard. With one click you can instantly open and edit information associated with Matters, Time Entry, Contacts and Calendar.*